

+ Agenda

LCP Investment conference 2024

Turning turbulence into tailwinds

Tuesday 17 September

9:00AM Arrivals, breakfast and registrations

9:30AM Welcome and introduction
Zuhair Mohammed, Partner & Head of Investment, LCP

Geopolitical instability: Understand the implications on investment decisions to mitigate portfolio impact - view from the East
Yanmei Xie, Geopolitics Analyst, GaveKal Research

Transition resource and materials: myths, realities and how to future proof climate supply chains
Sophie Lu, Global Head of Heavy Industry Decarbonisation, Climate Transition, HSBC

11:00AM Coffee break

11:30AM **Keynote: US elections, impact on markets and what global investors need to know**
Charles Myers, Chairman & Founder, Signum Global Advisors

Reimagining your portfolio - purposefully investing your assets in a changing world
Steve Hodder, Partner, LCP

12:50PM Lunch

2:00PM Are **private markets** adjusting to a world of higher-for-longer global rates?
Jenny Harbord, Head of Real Assets, LCP
David Crofts, Advisor, Mubadala Investment Company

Keynote: From geopolitics to astropolitics: what's trending
Tim Marshall (bestselling author & journalist) on the underlying currents of international affairs

3:30PM Afternoon reception

5:00PM Close

Keynote speakers



Charles Myers

Chairman & Founder, Signum Global Advisors

Charles has over 25 years of US political and electoral experience advising candidates including Hillary Clinton and Joe Biden. He also has 30 years of experience in global financial markets.

As Chairman, Charles works with financial institutions and multinational businesses to anticipate and assess policy agendas and announcements. Areas of expertise include US foreign policy and the implications of the Biden presidency in the US, Europe and Asia. Charles also forecasts global trade policy and energy dynamics.

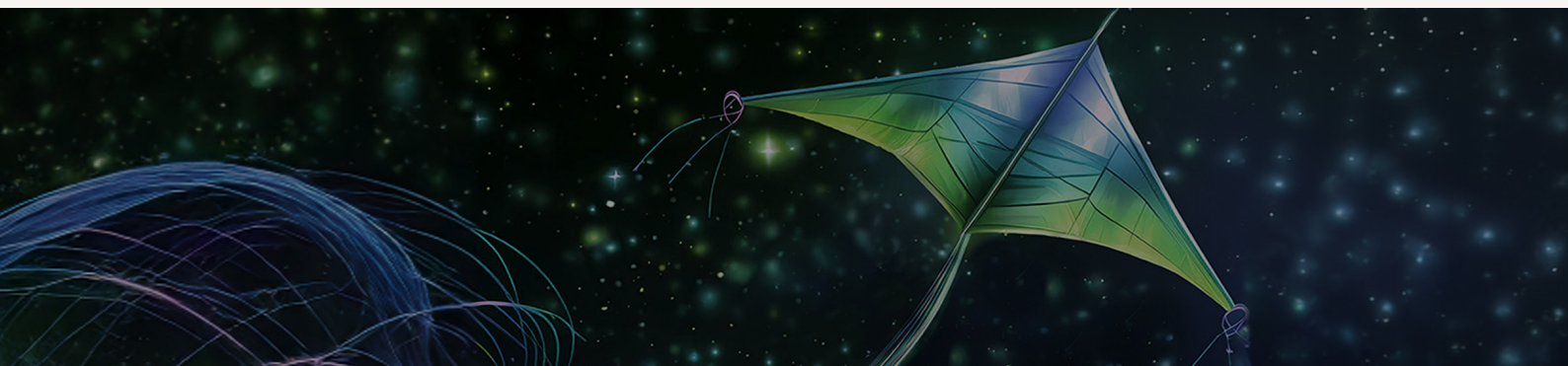


Tim Marshall

Bestselling author & journalist

With 30 years' experience in news reporting and presenting, Tim Marshall was Diplomatic Editor and foreign correspondent for Sky News. Tim has written five books that explore why nation states exist, the nature of borders and how the physical, cultural and political characteristics have come to define the world. His book, *Prisoners of Geography: Ten Maps That Tell You Everything You Need to Know About Global Politics*, became an international success.

Tim has been shot with bird pellets in Cairo, hit over the head with a plank of wood in London, bruised by the police in Tehran, arrested by Serbian intelligence, detained in Damascus, declared persona non grata in Croatia, bombed by the RAF in Belgrade and tear-gassed all over the world. However, he says none of this compares with the experience of going to see his beloved Leeds United away at Millwall FC in London.



Speakers

Zuhair Mohammed

Partner & Head of Investment, LCP

Zuhair is this year's conference chair. He has advised and run portfolios for pension schemes, insurance companies, charities and endowments over the last 35 years. Creating robust portfolios and maintaining them means looking well beyond the traditional investment silo. Just as important to your assets are timeframes, politics, national demographics, pandemics and climate change; to name but a few. As conference chair, he will help us explore new approaches to investment fundamentals and insights into the megatrends that will shape the future business landscape.



Sophie Lu

Global Head of Heavy Industry Decarbonisation, Climate Transition, HSBC

Sophie has over 13 years of experience in consulting, research, industrials, and finance with previous firms including Bloomberg New Energy Finance, BHP, and Rhodium Group. Her focus areas are energy and commodities markets, with a particular focus on metals and mining decarbonisation, critical minerals, power and carbon markets, and supply chain sustainability. She is also an expert in China's energy, climate, and industry policies and APAC climate and infrastructure financing.

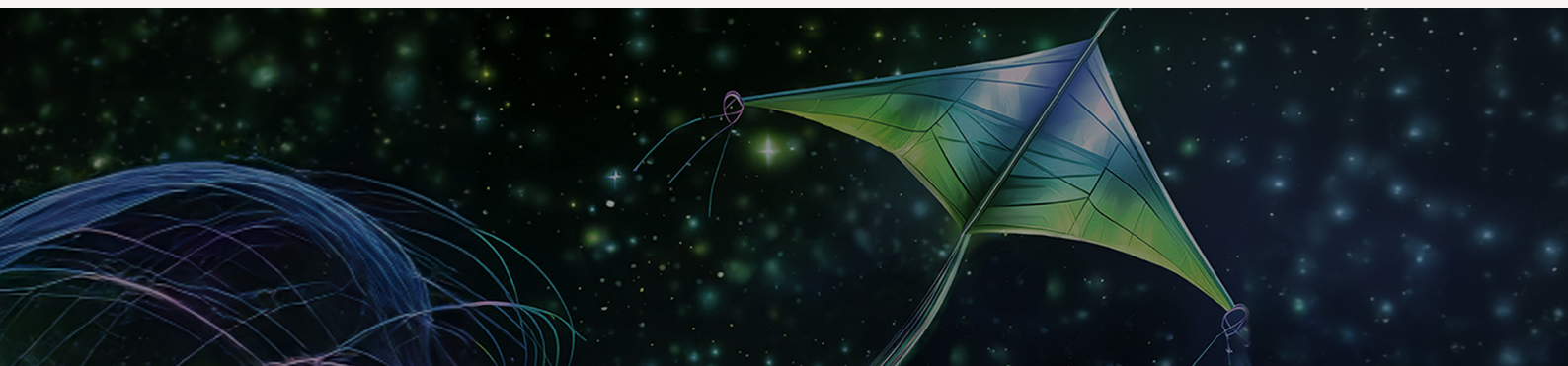


Yanmei Xie

Geopolitics Analyst, GaveKal Research

Yanmei analyses the implications of rising geopolitical and geoeconomic risks on trade, investments and supply chains. She has tracked China's political economy, elite politics, foreign policy and its technological, industrial and trade competition with other industrialised economies. She has also analysed US politics and policy, and the reemergence of industrial policy in developed economies. Her analysis is often based upon on-the-ground engagement with policymakers and corporate executives.

Yanmei was previously a senior analyst at the International Crisis Group. She has worked as a journalist in Washington, Yanmei's essays have been published in the Financial Times, Wall Street Journal and Foreign Policy. She was educated at the Chinese Foreign Affairs University, and has a master's degree in mass communications from Miami University and a master's in finance from George Washington University.



Speakers

Steve Hodder

Partner, LCP



Steve specialises in building robust investment strategies and communicating them clearly with his large institutional investment clients. He is not afraid to 'think outside of the box', and is exploring how investment strategies need to continue to evolve as the world changes around us at increasing pace.

Steve is also extensively involved in LCP's policy work with the UK government on how pension scheme assets can be more productively invested to benefit their members, sponsoring employers, the economy and drive the transition to a net zero economy.

Jenny Harbord

Head of Real Assets, LCP



Jenny has over 25 years of investment expertise, and a wealth of property and infrastructure knowledge. Jenny spent 15 years at Lendlease where they led capital solutions, transactions and developed innovative investment strategies. As Fund Manager for Lendlease's flagship retail fund, she oversaw significant holdings in UK shopping centres, including Bluewater. Her extensive experience spans multiple geographies, sectors, and the full risk spectrum, underpinned by deep relationships with key UK operators and fund managers, built over years of collaboration.

David Crofts

Advisor,
Mubadala Investment Company



David is currently an independent consultant to the Portfolio Strategy and Risk Platform at Mubadala Investment Company on various strategy and risk related matters. Until the end of March 2024, he was the Executive Director for Enterprise Risk Management at Mubadala based in Abu Dhabi, a position which he held for over 7 years. Before joining Mubadala, he was Managing Director of global accounts and risk consulting at Aon Risk Services based in London, UK. He was also Head of Risk and Insurance at Cadbury plc, where he held a variety of regional and global leadership roles during his 12 years with the organization.

David holds a Bachelor of Arts (Industrial Economics) from the University of Nottingham.

